

PRODUCTION WORKSHOPS CATALOGUE



Offenders receive training to manufacture the items in this catalogue, thus enabling them to be economically active upon their release.



correctional services

Department:
Correctional Services
REPUBLIC OF SOUTH AFRICA

INTRODUCTION

The role of production workshops in the rehabilitation of offenders.

The main aim of production workshops within the Department of Correctional Services is embedded in Section 3(2)(b) of the Correctional Services Act (Act 111 of 1998) which states that “the department must as far as possible be self sufficient and operate according to business principles”.

This legal mandate and the enhancement of the productive capacity of offenders is also reflected in paragraph 4.4.8 of the White Paper on Corrections (2005) where it is acknowledged that employment and making a contribution towards the wealth of the community is a key contribution to rehabilitation and the prevention of recidivism. It is therefore the responsibility of the department to ensure that offenders are appropriately skilled in market related skills to ensure that they will be able to be economically active and be gainfully employed upon their release. To this end production workshops play an important role in order to ensure that offenders received skills in the relevant training fields that the workshops are offering.

This White Paper furthermore states that the objective of departmental run factories should enhance self sufficiency in the department and should contribute towards the self esteem and sense of worth of offenders through the payment of gratuity for their labour. The responsibility is therefore upon the department to develop commercially viable factories and farms, without undue advantage over similar industries in the private sector.

Production workshops comprise of ten wood and steel workshops, nineteen textile workshops, one shoe factory and six bakeries. Products produced at these workshops include office furniture, kitchen-, prison- and recreation equipment, all the garments offenders wear (except ladies



underwear and socks), all bedding items, male offender shoes and brown bread. This catalogue reflects some of the products that are being produced in the different production workshops.

CONTENTS

<i>Seating</i>	4
Operators and General	4
Managerial	7
Executive	9
Outdoor	11
<i>Desks, tables and conference furniture</i>	12
<i>Storage and filing</i>	19
<i>Training and recreational Items</i>	28
<i>Steel items</i>	30
<i>Kitchen items</i>	31
<i>Security items</i>	34
<i>Accessories</i>	37
<i>Signage</i>	39
<i>Contact persons (Head Office)</i>	41
<i>Procedures to be followed when ordering</i>	42
<i>Workshop contact details</i>	43
<i>Offender uniform and textiles</i>	45

SEATING

Operators • General



CHAIR CONFERENCE
and visitors

999995T7724673

CHAIR STACKABLE
steel frame upholstered

999995T7731096



CHAIR TYPIST

999995T7734472

CHAIR LOW BACK
executive

999995T7730688



SEATING

Operators • General



CHAIR STRAIGHT
*steel frame artificial leather
upholstery*
999995T7991817



CHAIR VISITOR
steel frame
999995T8282485



CHAIR UPHOLSTERED
with steel frame and arms
999995T8510392

SEATING

Operators • General

CHAIR EASY

*visitor wood frame with
armrest padded seat
and backrest*

999995T7724661



CHAIR VISITORS

*wood frame with arm rest
padded, material seat and
backrest*

99999T7724673



CHAIR TYPIST

71101801524913



OFFICE SEATING AVAILABLE IN OAK, CHERRY, KIAAT
AND SALIGNA WOOD FINISHES.

SEATING

Managerial

CHAIR STRAIGHT

steel frame leather upholstery

999995T7991817



CHAIR STRAIGHT steel

frame leather upholstery

999995T7991817



CHAIR CONFERENCE

with upholstered seat and back with armrest

999995T7724661



SEATING

Managerial



CHAIR HIGH BACK
*upholstered and leather,
wooden arm rest*
999995T7730346

CHAIR HIGH BACK with
castors and armrest
999995T7730346



**CHAIR EXECUTIVE
HIGH BACK**
*with gas tilt and height
adjustment*
999995T7730361

SEATING

Executive



COUCH NGUNI LEATHER

two seater

999995T08030088

CHAIR NGUNI LEATHER

with armrest and wings

999995T08030088



**CHAIR TUB NGUNI
LEATHER**

Unguni cattle skin

999995T7730361



SEATING

Executive



COUCH LEATHER

two seater

999995T7694060



**COUCH
LEATHER**

one seater

999995T8168231



COUCH LEATHER

two seater

999995T7694060



**COUCH
LEATHER**

one seater

999995T8168231

SEATING

Executive

CHAIR TUB
fully upholstered
999995T8309332



SEATING

Outdoor



BENCH GARDEN
steel frame
999995T7695811

BENCH WOOD/o8
without back rest
999995T7697157



DESKS, TABLES AND CONFERENCE FURNITURE

DESK EXECUTIVE

2.1m x 1.1m

999995T7912482



DESK EXECUTIVE

2.1m x 1.1m

999995T8224828



DESKS, TABLES AND CONFERENCE FURNITURE



DESK ALU RANGE

2.1m x 1.1m

999995T7912482



DESK L.S

2.3m x 1.2m

999995T8053480



DESK SECRETARY

2.2m x 1.1m

999995T8704900



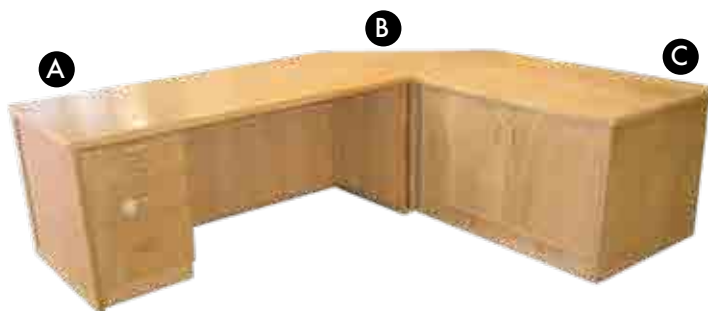
DESK CURVE

line and extension

2.3m x 1.4m • 1.8m x 1.2m

999995T8709495

DESKS, TABLES AND CONFERENCE FURNITURE



A DESK OFFICE (Junior manager)

1800mm x 900mm x 745mm

999995T8051702

B DESK CORNER link

900mm x 900mm

999995T7802174

C CREDENZA OFFICE (Swing doors)

lockable

1200mm x 900mm x 745mm

999995T7721451



COUNTER

reception corner

***Size: According
to office size.***

999995T8412037



TABLE COMPUTER

1.2m x 700mm

999995T7841428

ALL DESKS, TABLES AND CONFERENCE TABLES
AVAILABLE IN OAK, KIAAT AND SALIGNA (NATURAL
OR MAHOGANY STAIN) WOOD FINISHES.

DESKS, TABLES AND CONFERENCE FURNITURE



DESK L extension, free
standing, two legs cherry

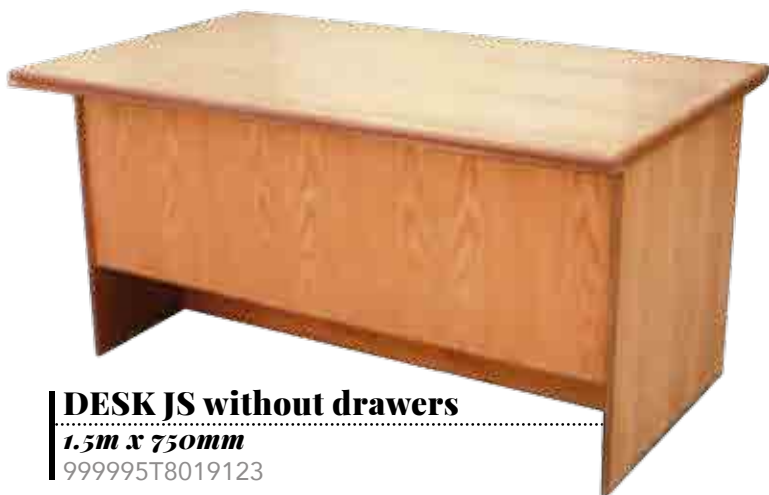
999995T8051880



TABLE CONFERENCE UNIT OAK

*Conference units made to order and
office size*

999995T7842533



DESK JS without drawers

1.5m x 750mm

999995T8019123

DESKS, TABLES AND CONFERENCE FURNITURE



**TABLE
CONFERENCE**

*Oak veneer oval
2.4m x 1.2m*

999995T7842180



TABLE MAGAZINE

1000mm x 500mm x 450mm

999995T7844691



TABLE TELEPHONE

999995T7853587

**TABLE OAK
magazine**

600mm x 600mm

999995T7845151



DESKS, TABLES AND CONFERENCE FURNITURE



PEDENZA
*with drawers and
roller doors alu range*
1.3m x 600mm
999995T7909563



TABLE
conference
curve line round
1800 six seater
999995T7842103

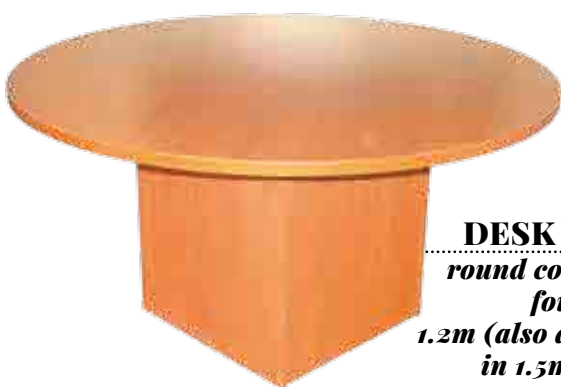


TABLE
CONFERENCE
curve line round four
seater 1.2
999995T7915073
Five seater 1.5
999995T7842091



TABLE CONFERENCE
curve line round 1800 six seater
999995T7842089

DESKS, TABLES AND CONFERENCE FURNITURE



DESK WOOD
*round conference
four seater
1.2m (also available
in 1.5m x 1.8m)*
999995T7985880



TABLE MAGAZINE
*with glass curve line
1m x 700mm x 450mm*
999995T7841732



TABLE COFFEE
*curve legs
1m x 600mm x 450mm*
999995T77841024



TABLE ASHTRAY
*curve line
600mm*
999995 T8411934

STORAGE AND FILING



WALL UNIT

three piece

999995 T7860671

WALL UNITS ACCORDING TO OFFICE SIZE.



BOOKCASE

four doors type F

1.9m high

999995T7834219

STORAGE AND FILING



BOOK CASE

glass doors

1.5m high

999995T7834219



BOOK CASE WALL

*glass and wooden
doors*

1.5m high

999995T8225296

STORAGE AND FILING



WALL UNIT

four piece

999995T8165211



WALL UNIT

two piece with LCD display and bar

999995T7986375

WALL UNITS ARE MANUFACTURED ACCORDING TO OFFICE SIZE.

STORAGE AND FILING



SERVER

2.2m x 600mm

999995U0478913



CUPBOARD

wood display

2.2m x 600mm

999995T8665794



CUPBOARD

stationary

999995T9326963

STORAGE AND FILING



BOOKCASE
four door type F
1.9m tall
999995T7834219



BOOKCASE,
wood, wooden door below,
2 drawers middle, glass doors
1.9m tall
999995T7835566



EXECUTIVE
TV UNIT
999995T835515

STORAGE AND FILING

A **DRAWER UNIT**
four drawer cherry
999995T8002180

B **FOUR DRAWER**
filing
cabinet
999995T7819016



C **CUPBOARD**
cherry 1.5m
999995T8042323

D **CUPBOARD**
1.9m
999995T8051284



CUPBOARD
stationary typist
999995T9326963



STORAGE AND FILING



**SERVING
UNIT**

with doors
999995T9863148



DRAWER UNIT

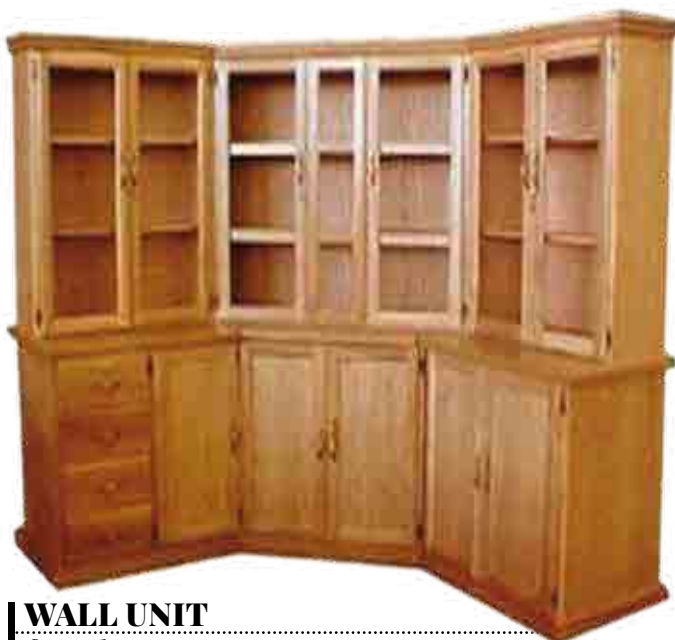
999995T8048441



FILING CABINET
four drawer

999995T8412090

STORAGE AND FILING



WALL UNIT

four drawers

999995T9066961



RACK CORRESPONDENCE

30 division

999995T8064230



DRAWER UNIT

999995T8048441

STORAGE AND FILING

DRAWER UNIT

999995T8048441



CABINET FILING

PK four drawer

999995T7819016

CABINET FILING

three drawers wood

999995T8709495



CABINET

for CID documents

999995T7819497

TRAINING AND RECREATIONAL ITEMS

Student desk (small)

999995T7999930

Student desk (medium)

999995T7999903

Student desk (large)

999995T7999450

Student desk (x large)

999995T8001087

CHAIR

polypropylene

999995T9555779



BOARD

*modeling school, black or
green, portable*

999995T84662296



BOARD

*modelling fixture school
black or green*

999995T8424638

TRAINING AND RECREATIONAL ITEMS



CHESSBOARD
with pieces
999995T8159853

**CHESS/
DRAUGHT
BOARD**
999995T8160119



GAME
finger board
999995T8886412

STEEL ITEMS



CABINET STEEL

*30 distribution
racks, lockable
doors*



TABLE STEEL

collapsible
999995T7853082



CABINET STEEL

television
999995T7791724

DOG SHELTER

999995T9555399



KITCHEN ITEMS

A SERVING BUCKET S/S

999995T7813900

B MASHER S/S

999995T8267559

C GRATER FOOD S/S

999995T8219774



D MUGS offender type

999995T8203248

E PLATE offender type

999995T9555490

F SPOON offender type

999995T8205484



FOOD BIN 100 litre G

999995T9555476

FOOD BIN 40 litre H

999995T8491831

FOOD BIN 20 litre I

999995T9555488



KITCHEN ITEMS

J MEASURING SPOONS, per set

999995T8277

K SPOON serving 250 ml

999995T8195239

L SPOON serving 500 ml

999995T8196092

M EGG LIFTER s/s

999995T9555464

N CHEFF FORK s/s heavy duty

999995T9555437



Q SCOOP sugar or flour

99999T8277461

R FUNNEL 180mm

99999T8239067



TABLE stainless steel folded legs

999995T7855012

BENCH dining

999995T7695342

KITCHEN ITEMS



CONTAINER

bread and meat with lid
600mm x 315mm x 325mm

999995T9070172

TROLLEY

food (five bowls)

999995T9555591



TROLLEY

food (100 dishes)

999995T9555553

SECURITY ITEMS



SAFE
pistol square
SABS Ref: ZM 135a
Nº: 2536/31996/2M153
240mm x 341mm x 1367mm
999995T955648



SAFE
rifle steel
999995T8023830



LOCKER STEEL
ten square doors
999995T9555223

SECURITY ITEMS



LOCKER
bedside hospital
999995T8054367



BED OFFENDER
double with two lockers
999995T9555286

SECURITY ITEMS

GATE SECURITY

for office use

999995T8081693



DOOR

hollow metal, framed

999995T9556516

GRILL prison type

999995T9326529

DOOR, hollow no frame

999995T8072872

DOOR frame, prison type

999995T8084042

P-FENCE

palisade fence

999995T8494155



ACCESSORIES



STAND FLOWER

wood

999995T8166872



RACK

incoming/outgoing post (pair)

999995T9556009

BIN WASTE

Supa wood

999995T9555627



ACCESSORIES

PULPIT

wood church type

999995T8260566



STAND

hat and coat wood

999995T7983226



TROLLEY **tea wood**

*Available in various
wood types*

999995T9556353

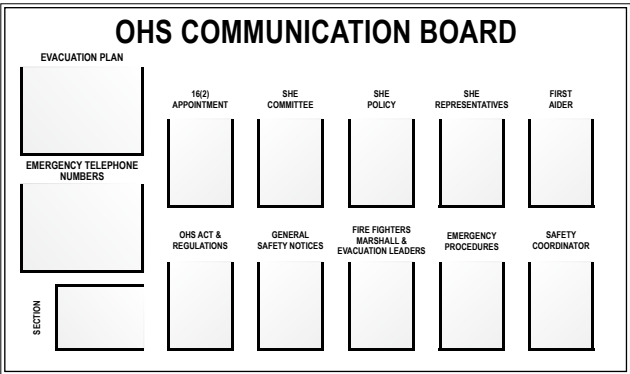
SIGNAGE



**SIGN BOARDS,
manufacturing of notice
boards miscellaneous
services**
999995T9279744



SIGN BOARD: Safety
999995T8211652



**BOARD notice OHS
communication board steel
plate**
999995T8600886

SIGNAGE



WELCOME notice board
(Correctional Services)
999995T9555375



BOARD notice visitors
999995T7819485

CONTACT PERSONS

Dir. Production Workshops & Agriculture ***EMC Lepule***

Tel: (012) 305 8789

e-mail: elizabeth.lepule@dcs.gov.za

DD Production Workshops ***MW Bron***

Tel: (012) 305 8376

e-mail: mitchell.bron@dcs.gov.za

ASD Workshop Operations ***Ruth Adeloye***

Tel: (012) 305 8319

E-mail: Adeloye.ruth@dcs.gov.za

ASD Planning **Production Workshops** ***Linda Phethlu***

Tel: (012) 305 8317

E-mail: linda.phethlu@dcs.gov.za

Principal user Workshops **Costing System** ***Abram Mpeta***

Tel: (012) 305 8311

E-mail: abram.mpeta@dcs.gov.za

SAO Wood and Steel ***Ricardo Johnson***

Tel: (012) 305 8309

E-mail: Ricardo.johnson@dcs.gov.za

Workshop Administration ***Carike Visser***

Tel: (012) 305 8314

E-mail: carike.visser@dcs.gov.za

PROCEDURE TO FOLLOW WHEN ORDERING

The Correctional Services Act: Act 111 of 1998 states the following:

133. Agreements for articles, supplies and services.

- (1) All State departments must, as far as practicable, purchase articles and supplies manufactured by prisoner labour from the Department at fair and reasonable prices as may be determined by the Minister of Finance.

Other Government Departments

1. Phone the nearest Departmental Workshop*, speak to the Section Head: Production Workshops to determine if they can be of assistance in the manufacturing of the product required.
2. Forward your request to DCS Head Office for an official quotation. If the quotation is acceptable, then forward your official purchase order to DCS Head Office for approval and disposal.
3. The completion time will be determined by the amount of work on hand in the specific workshop but should not exceed 3 months from approval by H.O. Estimated completion time can be negotiated with the Section Head: Production Workshop.
4. When the product is completed, the workshop will forward a Z59 to DCS Head Office to commence payment of the product.
5. The workshop will contact the client when the product IS READY FOR DISPATCH/COLLECTED
6. Orders from other government departments should reach DCS Head Office by the end of August of each financial year to ensure speedy delivery.

DCS

1. Supply Chain units must annually submit their needs of the next financial year for the manufacturing of workshop products / services (Wood, steel, textile or bakery) before or on 30 September each year to Head Office, Director: Production Workshops and Agriculture.
2. Where an item does not form part of the annual Master Schedule of the Directorate Production Workshops & Agriculture, but the item is required, the Requisitioning Depot should first contact the closest Manufacturing Workshop and obtain a quote and confirmation that the specific workshop will be able to manufacture the item as 'unscheduled'.
3. Internal requisitioning procedure is followed when items, goods or services are available from own Management Area or Correctional Centre (internal sources)
4. External requisitioning procedure is followed when items, goods or services are available from other Management Areas (internal sources).
5. NB. Requisitioning depots must ensure that the correct ICN and store number are used.

WORKSHOP CONTACT DETAILS

6. The item is issued to the Requisitioning Depot/ Cost Centre.
7. The transit clerk (at the receiving depot) must mark the item if it is an asset and indicate the asset number on the receipt voucher.

**Departmental Workshops, as well as contact numbers are as follows:*

Head Office

Tel: (012) 305 8309, Fax: (012) 321 1997

Gauteng Region

Kgoši Mampuru II (Pretoria) (wood steel and textile)

Store number: 9510395068

Tel: (012) 314 1782/3/4, Fax: (012) 314 1758

Boksburg (wood, steel and textile)

Store number: 9510395066

Tel: (011) 898 3873/4, Fax: (011) 913 4921

Leeuwkop. (Bryanston) (wood and steel)

Store number: 9510395124

Tel: (011) 208 9535/38, Fax: (011) 260 0200

Zonderwater. (Cullinan/Pretoria) (wood, steel and textile)

Store number: 9510395067

Tel: (012) 305 7146/7112, Fax: (012) 734 3992

Johannesburg (textile)

Store number: 9510395065

Tel: (011) 933 7103, Fax: (011) 941 1181

Limpopo, Mpumalanga and North West

Thohoyandou (wood, steel and textile)

Store number: 9510795011

Tel: (015) 963 8629/8500, Fax: (015) 963 8629

Witbank (textile)

Store number: 9510595072

Tel: (013) 656 3525, Fax: (013) 690 3962

Mogwase (textile)

Store number: 9510895103

Tel: (014) 555 5630, Fax: (014) 555 5726

Potchefstroom (textile)

Store number: 9510895139

Tel: (018) 291 1011, Fax: (018) 291 1068

WORKSHOP CONTACT DETAILS

KwaZulu-Natal

Pietermaritzburg (wood, steel and textile)

Store number: 9510495022

Tel: (033) 845 5500/5621, Fax: (033) 394 0420

Durban (textile)

Store number: 9510495081

Tel: (031) 204 8811/8855, Fax: (031) 267 2902

Free State and Northern Cape

Bizzah Makhate (Kroonstad)

(wood, steel and textile)

Store number: 951029587

Tel: (056) 216 4318/9/4337, Fax: (056) 213 1517

Tshwelopele (Kimberley)

(textile)

Store number: 9510695086

Tel: (053) 836 6262, Fax: (053) 861 2857

Eastern Cape

St Albans. (Port Elizabeth) (wood, steel and textile)

Store number: 9510195084

Tel: (041) 398 1198/1276/1277, Fax: (041) 775 1171

East London (textile)

Store number: 9510195047

Tel: (043) 731 2250, Fax: (043) 763 6734

Western Cape Region

Pollsmoor. (Tokai) (wood, steel and textile)

Store number: 9510995077

Tel: (021) 700 1260/1/2, Fax: (021) 701 9246

Drakenstein. (Paarl) (wood, steel and textile)

Store number: 9510395096

Tel: (021) 864 8040, Fax: (021) 867 0715

West Coast (Malmesbury)

(textile)

Store number: 9510995052

Tel: (022) 487 1350, Fax: (022) 487 1362

Worcester. (Breede River) (textile)

Store number: 9510995035

Tel: (023) 348 7768, Fax: (023) 347 4550

Helderstroom. (Overberg) (wood, steel and textile)

Store number: 9510995031

Tel: (028) 215 8611, Fax: (028) 214 8637

OFFENDER UNIFORM AND TEXTILES

PRODUCTS	MANUFACTURING PRODUCTION WORKSHOPS
Apron, PVC	Tshwelopele
Beanies	Mogwase Overberg
Bed sheets	Boksburg Breederivier East London St Albans
Blouse (female)	Pollsmoor
Coffee/tea bags	Breederivier
Curtains	Breederivier
Draw sheet	Breederivier
Dress female summer	Pollsmoor
Dress food	Breederivier
Duvet cover	Durban-Westville
Facecloth blue	Kgoši Mampuru II
Food cover	Breederivier
Gown blue	Kgoši Mampuru II
Hats (juvenile)	Pollsmoor
Hats, orange	West Coast
Hats, yellow (remand)	
Ironing sheet	Breederivier
Jacket (female)	Pollsmoor
Jacket (juvenile)	
Jacket, white	Bizzah Makhate Breederivier
Jacket, yellow (remand)	Tshwelopele West Coast
Male drawer	Boksburg Breederivier Durban-Westville
Mattress covers	Boksburg Zonderwater Drakenstein
Overcoat, white	Bizzah Makhate Breederivier
Overall (juvenile)	Durban-Westville Pollsmoor
Overall, orange	West Coast
Overall, red	Boksburg
Overall, white	Bizzah Makhate Breederivier
Pillow cases	Boksburg Breederivier East London St Albans
Press cloth	Breederivier
Pyjamas, female, summer	Bizzah Makhate
Pyjamas, female, winter	Breederivier
Pyjamas, summer	
Pyjamas, winter	
Raincoat, PVC	Tshwelopele

OFFENDER UNIFORM AND TEXTILES

PRODUCTS	MANUFACTURING PRODUCTION WORKSHOPS
Sheet, hospital, offender, blue	Kgosi Mampuru II
Shirt, juvenile	Durban-Westville Pollsmoor
Shirt, orange	Boksburg Drakenstein East London Pietermaritzburg Potchefstroom St Albans Thohoyandou Tshwelopele West Coast Witbank Zonderwater
Shirt, red	West Coast
Shirt, short sleeve	Pollsmoor
Shirt, yellow (remand)	Durban-Westville Pollsmoor St Albans Tshwelopele West Coast
Shirt, white	Bizzah Makhate Breederivier
Sweater, tops	Mogwase Overberg
Table cloth Theatre gowns	Breederivier
Towel, blue Towel, white	Kgoši Mampuru II
Trouser, orange	Boksburg Drakenstein East London Pietermaritzburg Potchefstroom St Albans Thohoyandou Tshwelopele West Coast Witbank Zonderwater
Trouser, red	West Coast
Trouser suit, female	Pollsmoor
Trouser, yellow (remand)	Durban-Westville Pietermaritzburg Pollsmoor St Albans West Coast
Trouser, white	Bizzah Makhate Breederivier
Vests	Boksburg St Albans



PRODUCTION WORKSHOPS CATALOGUE

DEPARTMENT OF CORRECTIONAL SERVICES